



A.B.N. 39 073 621 208

Factory 13 5 Speedwell Street Somerville Vic 3912
Phone (03) 5978 8755

Email : info@roofextenda.com.au
Website : www.roofextenda.com.au

SHADE SAIL ANCHOR INSTALLATION GUIDE

General Installation

1. Remove roofing tiles or lift roof sheet to achieve an opening to fit the Roof Extenda Shade Sail Anchor.
2. Bolt the section with steel rod and the backing plate to the rafter using 4 x M12 bolts. Secure both brackets to the top plate with 2-M10 coach screws to each bracket.
3. Replace roof tiles or roof sheet, cutting a hole to allow the loop & roof to penetrate the roof.



Care Instructions

Shade Sail Anchor to be cleaned and inspected yearly and re-coated if required.

FlashRite Weather Seal

If using a FlashRite weather seal it is fitted to the top bracket, top bracket is then wound down to the desired height and the lock nut tightened. Mark the position of the FlashRite weather seal on the roofing. Slide the FlashRite weather seal up to apply clear neutral cure silicone inside the area marked, press the FlashRite weather seal into position and finish with a bead of silicone to the edges of the FlashRite weather seal to complete the fitting.

Flexatile

If using a flexatile, remove the middle lining from the underside of the flexatile. Cut the rubber cone at least 15mm smaller than the bracket OD with a sharp knife or scissors. Ensure tiles are cleaned before installation. Lubricate the bracket with water and slide the flashing down the bracket. Form an anti-capillary fold at top of base sheet. Remove the protective backing from the underside of the flashing, that is covering the butyl adhesive strips. Hand form the base all around the tile and apply pressure to the butyl adhesive side strip.

Note

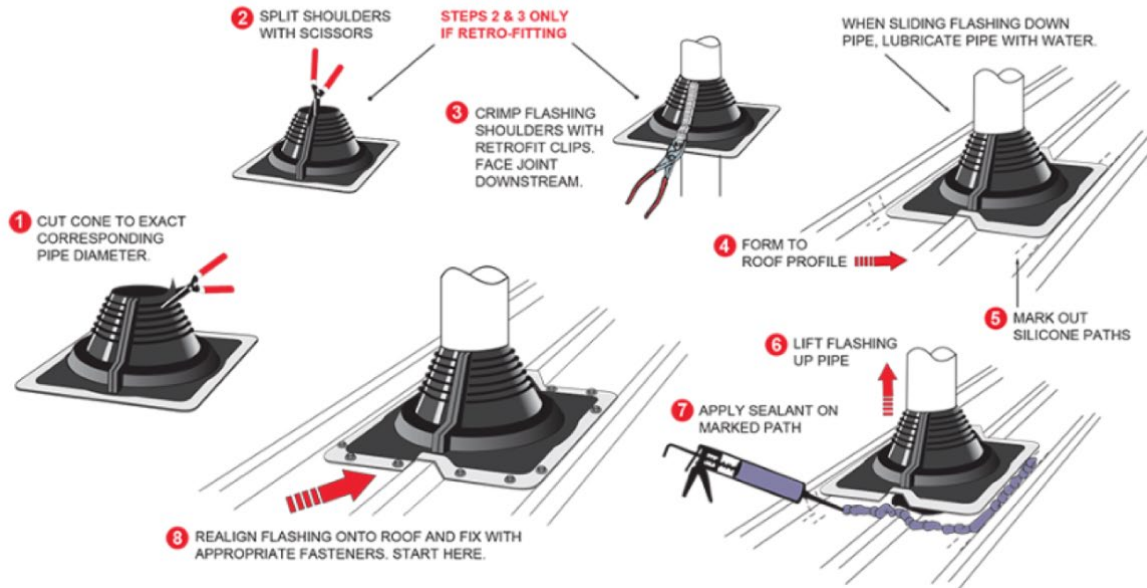
Local Council or Shire approval may be required prior to construction.

Roof Extenda accepts no responsibility for the type of construction undertaken.

The Shade Sail Anchor has been strength tested. When bolted in the top holes, the Anchor can deform at 2.3kN of force. When bolted in the middle holes, the Anchor can deform at 1.3kN of force.

We advise you carefully evaluate the shade sail size, location, wind category & installation design before purchasing.

Installation Overview



Installation Overview

